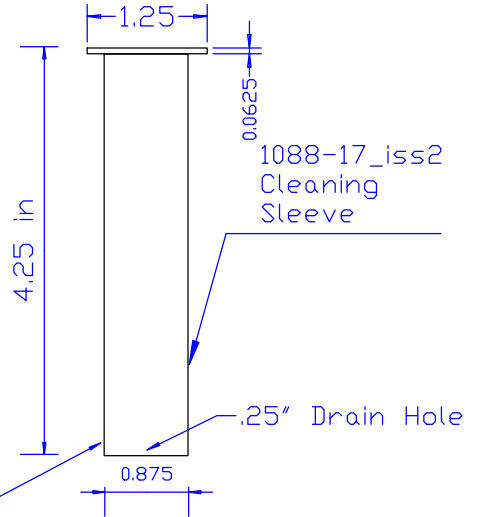
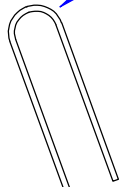


1088-16-REM
Assembled
unit with
Rare Earth Magnets

088_iss2

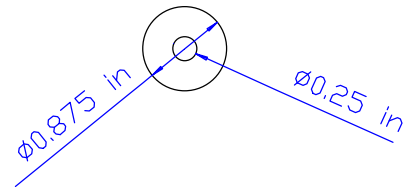
see magnet
assemblies drawing

Rare Earth magnets
1016



A

View From A



**Powerwise
Ink Pumps**

2700 West 21st Street
Erie PA 16506 USA

Issue 2 August 5 2019 - changed sleeve length,
added handle number

The contents of this drawing are subject to copyright and
must not be disclosed to a third party or reproduced
without the permission of Powerwise Corp.

Drawing No.	1088-16-REM		
Description	Parts for Assy.		
Scale	1/2	Author	PJH
Date	September 15 2016		
Issue	2		